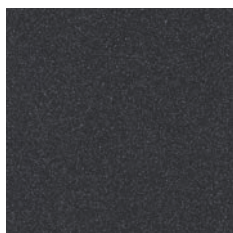


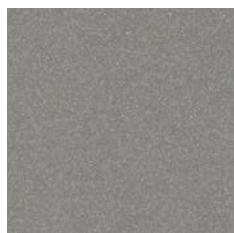
## KERLITE COLORS

Conforme / In compliance with / Conforme / Gemäß: ISO 13006-G, EN 14411-G, ANSI 137.1

**Bla UGL** Porcellanato Ceramico Ultrasottile - Ultra thin Porcelain Stoneware  
Grès Cérame ultrafin - Extra-Dünnes Keramiksteingzeug



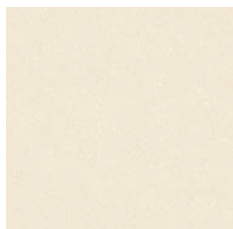
NIGHT



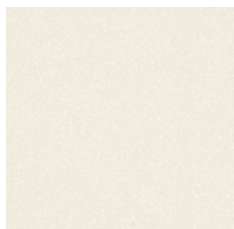
SMOKE



STEEL



SAND

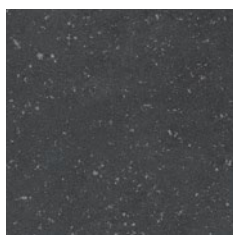


SNOW

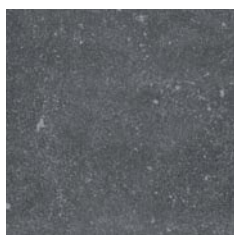
## KERLITE AVANTGARDE

Conforme / In compliance with / Conforme / Gemäß: ISO 13006-G, EN 14411-G, ANSI 137.1

**Bla UGL** Porcellanato Ceramico Ultrasottile - Ultra thin Porcelain Stoneware  
Grès Cérame ultrafin - Extra-Dünnes Keramiksteingzeug



BLUESTONE



PIETRA D'IRLANDA

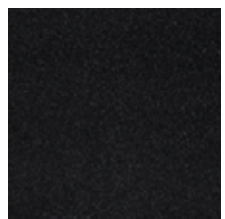


PIETRA CHIARA

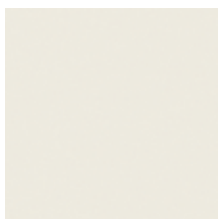
## KERLITE BLACK-WHITE

Conforme / In compliance with / Conforme / Gemäß: ISO 13006-G, EN 14411-G, ANSI 137.1

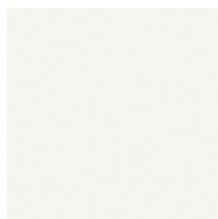
**Bla UGL** Porcellanato Ceramico Ultrasottile - Ultra thin Porcelain Stoneware  
Grès Cérame ultrafin - Extra-Dünnes Keramiksteingzeug



BLACK



WHITE



ULTRAWHITE

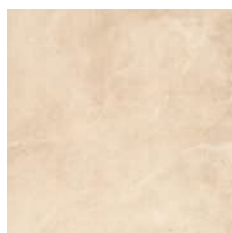
## KERLITE ELEGANCE

Conforme / In compliance with / Conforme / Gemäß: ISO 13006-G, EN 14411-G, ANSI 137.1

**Bla UGL** Porcellanato Ceramico Ultrasottile - Ultra thin Porcelain Stoneware  
Grès Cérame ultrafin - Extra-Dünnes Keramiksteingzeug



VIA CONDOTTI



VIA MONTENAPOLEONE



VIA TORNABUONI

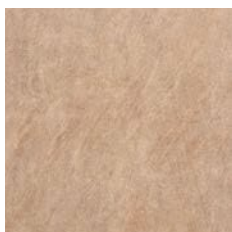


VIA FARINI

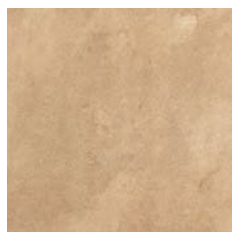
## KERLITE GEOQUARTZ

Conforme / In compliance with / Conforme / Gemäß: ISO 13006-G, EN 14411-G, ANSI 137.1

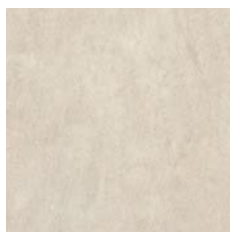
**Bla UGL** Porcellanato Ceramico Ultrasottile decorato a tecnologia digitale - Ultra thin Porcelain Stoneware with digital technology dec  
Grès Cérame ultrafin, décoré selon la technologie numérique - Extra-Dünnes Keramiksteingzeug, mit Digital-Technologie Dekor



ETNA



SINAI



DOVER

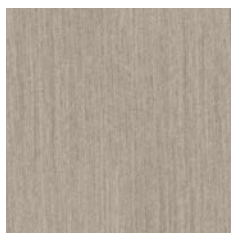
## KERLITE OAKS

Conforme / In compliance with / Conforme / Gemäß: ISO 13006-G, EN 14411-G, ANSI 137.1

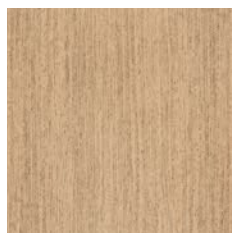
**Bla UGL** Porcellanato Ceramico Ultrasottile - Ultra thin Porcelain Stoneware  
Grès Cérame ultrafin - Extra-Dünnes Keramiksteingzeug



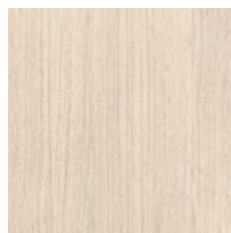
FOSSIL



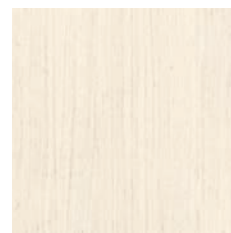
RAIN



LAND



TIMBER

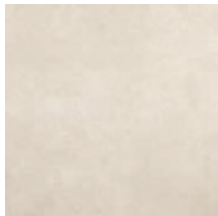


POLAR

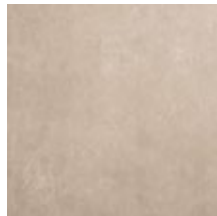
## KERLITE OVER

Conforme / In compliance with / Conforme / Gemäß: ISO 13006-G, EN 14411-G, ANSI 137.1

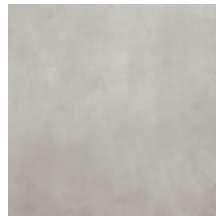
**Bla UGL** Porcellanato Ceramico Ultrasottile - Ultra thin Porcelain Stoneware  
Grès Cérame ultrafin - Extra-Dünnes Keramiksteingzeug



OPENSPLACE NATURALE  
OPENSPLACE SOFT



LOFT NATURALE  
LOFT SOFT



OFFICE NATURALE  
OFFICE SOFT



ROAD NATURALE  
ROAD SOFT